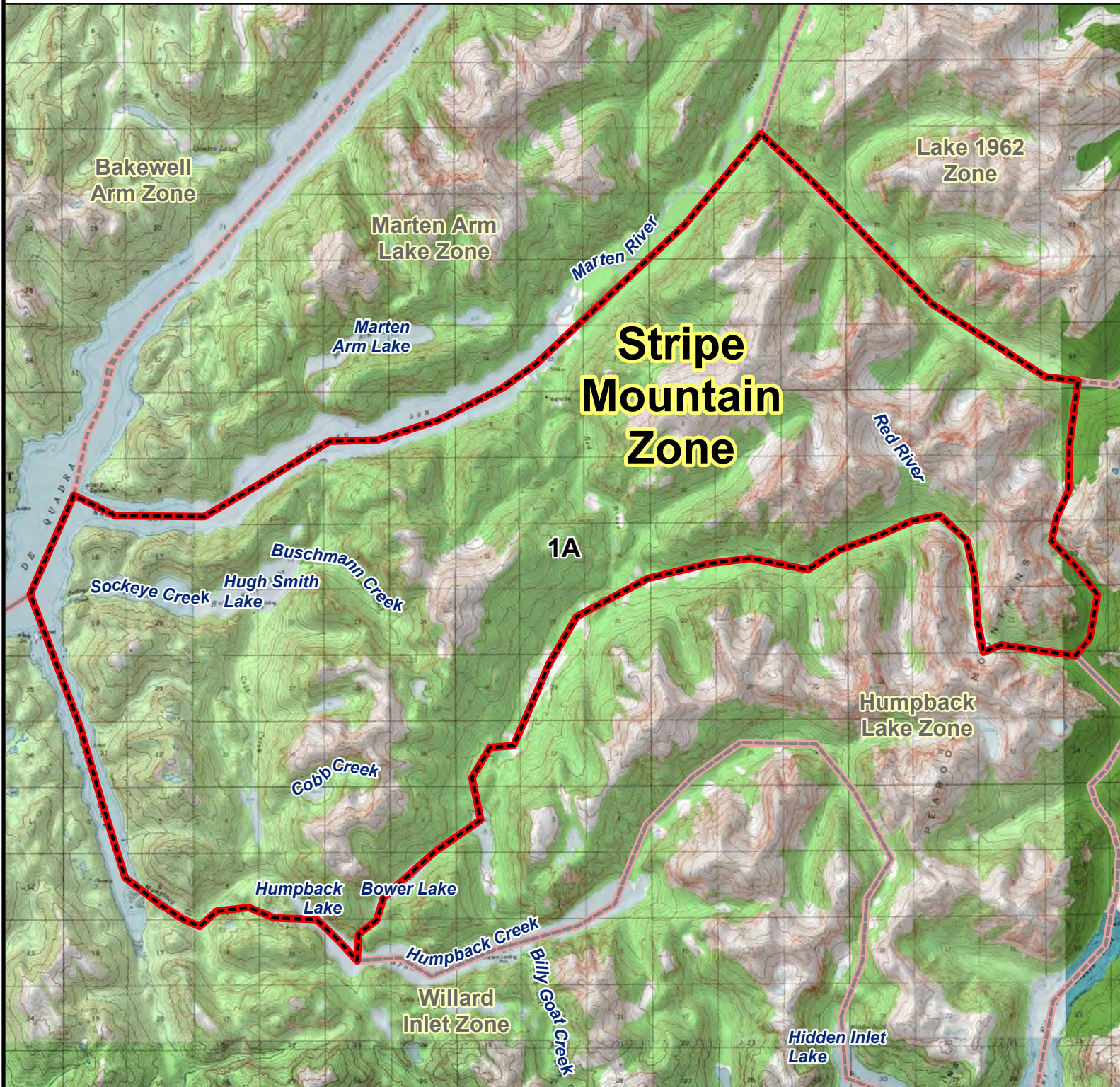


RG002 MOUNTAIN GOAT HUNT

Stripe Mountain Zone



Stripe Mountain Zone: Originating where Mink Bay and Boca De Quadra meet, northeast along Boca De Quadra to the mouth of Marten Arm, northeast to the head of Marten Arm where the Marten River flows into the arm, northeast along the Marten River to GPS coordinates N 55.198443, W -130.455565, southeast along the drainage to GPS coordinates N 55.143827, W -130.328476, then south from the GPS point following the drainage, over the saddle and down the other side, south down the drainage to GPS coordinates N 55.083307, W -130.330497, then west up the drainage through the Peabody Mountains and over the saddle, north and west along the drainage that flows into Bower Lake, west from Bower Lake into Humpback Lake, then northwest through Humpback Lake to where it flows into Humpback Creek, west through Humpback Creek to where it flows into Mink Bay, and north to the point of origin.

